



THE EVERSON MUSEUM

A Visual Introduction

WELCOME TO THE EVERSON!

We're glad you're on your way for a visit.



Here is a sneak peak of what you might see when you get here and also a brief guide for how to visit an art museum.



The Everson Museum Building



THE EVERSON MUSEUM BUILDING WAS CONSTRUCTED IN 1968 BY INTERNATIONALLY ACCLAIMED ARCHITECT I.M. PEI. THE EVERSON WAS THE FIRST MUSEUM DESIGNED BY PEI.



THE EVERSON BUILDING

The building is intended to be viewed as a sculpture and a work of art in its own right. What features of this building catch your eye?





Henry Moore, English (1898-1986)
Two Piece Reclining Figure no. 3
 Bronze



Josefa Filkosky,
 American (1933-1999)
Pipe Themes in Orange #2, 1976
 Enameled aluminum on steel base

THE EVERSON BUILDING

You will also see many sculptures outside the Everson.

If you get to the Museum early, take a look around at all the different exterior sculptures.

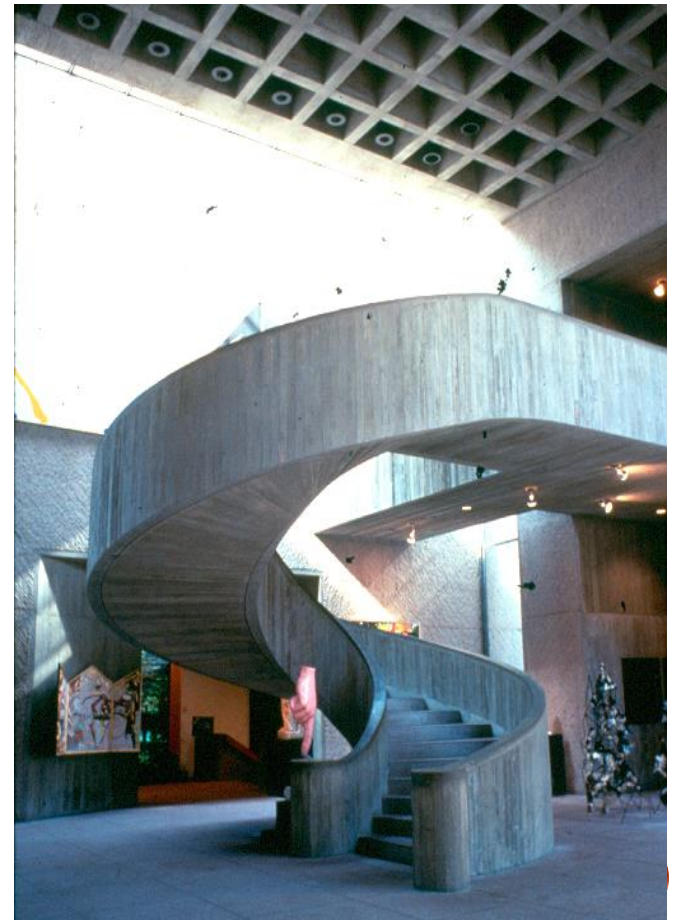


THE EVERSON BUILDING

ON THE OUTSIDE THE BUILDING LOOKS VERY ANGULAR AND LINEAR,
BUT ONCE INSIDE.....



Your view
changes with
each step as you
move up the
spiral staircase
in the **Sculpture
Court.**



EVERSON SCULPTURE COURT



WORKS OF ART & CONSERVATION

Sometimes works of art are taken off-display for conservation and cleaning, We also loan works of art to other museums for special exhibitions.

Most museums have more works of art in their collection than can be displayed at one time. Objects are stored safely and displayed occasionally to keep them safe from damaging UV light.

Some of the works of art you see in some of the photos of the Everson building may not currently be on display. You'll have to come back again and visit them!



MUSEUM LABELS

All the works of art you see in the Museum will have a label.
Museum labels can tell you a lot!

**Artists name,
nationality, and
birth-death
dates.**

Robert Arneson
American, 1930 – 1992

Five Splat, 1976
Stoneware

**It also tells who
donated the object or
where we received
funds to purchase the
object. The accession
number is used to track
the object.**

Museum purchase with matching
funds from the National Endowment
for the Arts, 80.9

**Title of the work of
art and year of
creation.**

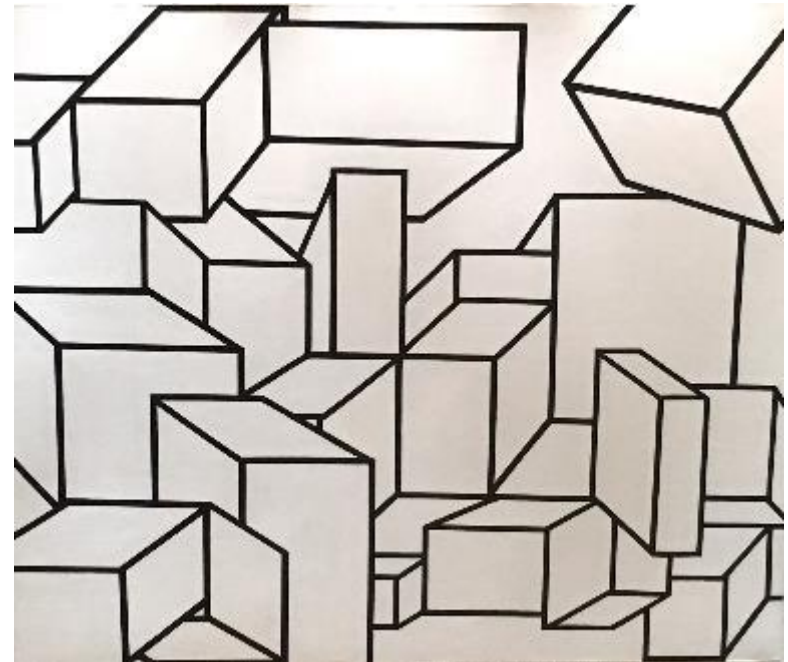
**The second line
lists the materials
used to make the
work of art.**



Works of Art

Main level

THE EVERSON'S PERMANENT COLLECTION CONSISTS MOSTLY OF AMERICAN PAINTINGS AND SCULPTURE AND CERAMICS FROM AROUND THE WORLD. ON THE MAIN LEVEL YOU WILL SEE TEMPORARY EXHIBITIONS OR WORKS FROM OUR PERMANENT COLLECTION.



Al Held, American (1928-2005)
B/W XVI, 1968
Acrylic on canvas

Ron Gorchov, American (b.1930)
The Strand, 1972
Acrylic on canvas





Helen Frankenthaler,
American (1928-2001),
The Human Edge, 1967
Acrylic on canvas



MAIN LEVEL BEADEL GALLERY



WORKS OF ART — PERMANENT COLLECTION

Two of the galleries on the Upper Level are devoted to temporary exhibitions. These exhibitions change three or four times a year. The Williams and Falcone Galleries feature works of art from the Everson's permanent collection.



IN THE UPPER LEVEL GALLERIES YOU MIGHT SEE...



Dennis Oppenheim
American (1938-2011)
*Impulse Reactor (A Device for Detecting, Entering,
Converting Past Lies
Traveling Underground and in the Air)*, 1980





Arnold Zimmerman
American (b. 1954)

Untitled Vessel, 1982

Earthenware



LOWER LEVEL

On the Lower Level of the Museum, you'll find:

- The Ceramics Gallery
- Administrative offices
- Green Room Gallery
- Education Center
- Restrooms (under the stairs)



Lois Hennesy, American
(b.1936)

Self-Sufficient, 2002

Bisque clay, watercolor, string, wood and
knitting needles



WORKS OF ART — CERAMIC GALLERY

The Everson Museum is very well known for its ceramics collection. The collection includes works from all over the world. The oldest piece in the collection is about 4500 years old! The Ceramic Gallery features rotating exhibitions throughout the year.



CERAMIC GALLERY



Beatrice Wood, American (1893-1998)
Ah!, 1962
Stoneware



WORKS OF ART — CERAMICS

A few of the works of art you'll see in the ceramics collection:



David Hicks
Pale Shrub, 2015
Glazed earthenware
and stainless steel



Adelaide Robineau
Scarab Vase, 1910
Porcelain



TEMPORARY EXHIBITIONS

Temporary exhibitions on the main and lower level feature national artists, as well as artists from the Central New York Community.



Vanessa German:
De.structive, Dis.tilation
Exhibit, Spring 2017



Mary Giehl: *Rice Is Life*
Exhibit,
Spring 2014



THE FINE PRINT

We need your help!

Help us take care of the art and provide you with the best experience possible, **please**:

- Remember to look with your eyes, not with your hands. Even clean hands have oils and acids on them that can damage works of art.
- Keep food and drinks out of the galleries.
- Photograph without a flash and only photograph our permanent collection. If you're not sure if you're allowed to photograph something, please ask a guard.
- Walk and use indoor voices. Stay with your tour group and do not run ahead.
- Keep a safe distance of about 2 feet from the artwork.
- Listen to museum staff, docents and your classmates and teachers.
- Have a good time!

