

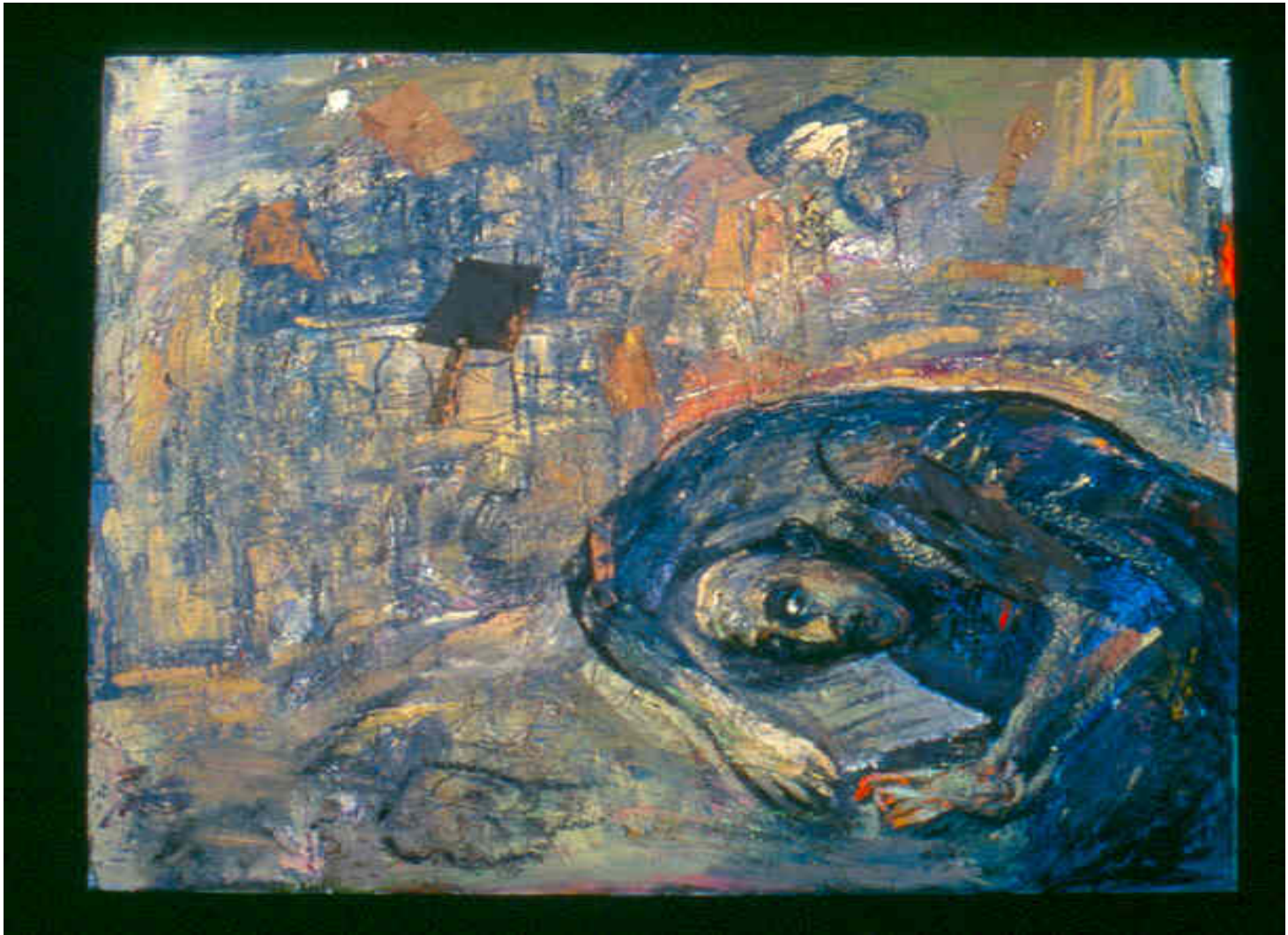
Everson Museum of Art

Miriam Beerman: Eloquent Paint

September 16, 2006-January 7, 2007



And Outside Finches Singing, 1996



December (In Memory), 1992



Duende, 1993



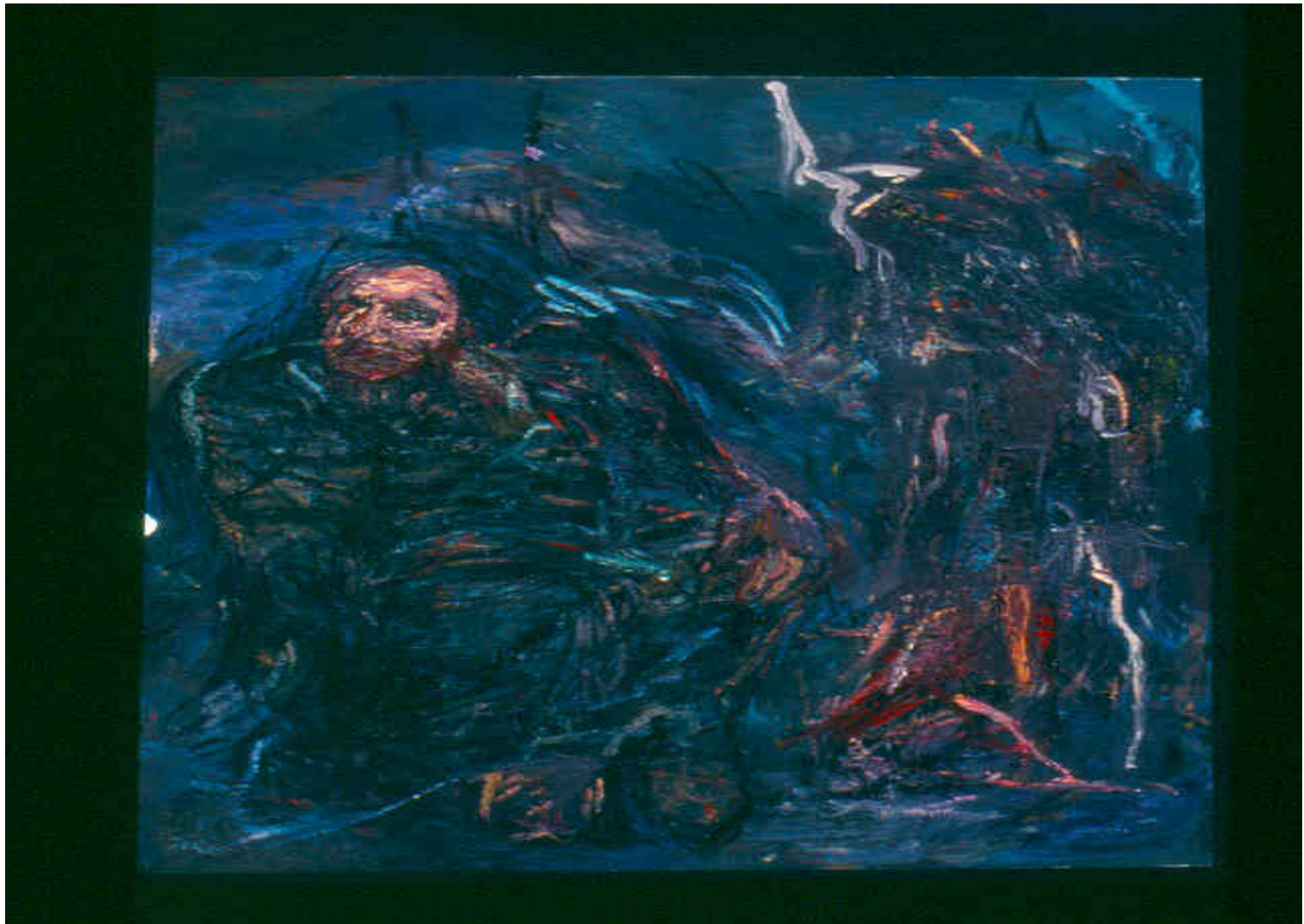
Existenz, 1997



Ghetto Documents



Ghetto Drawings



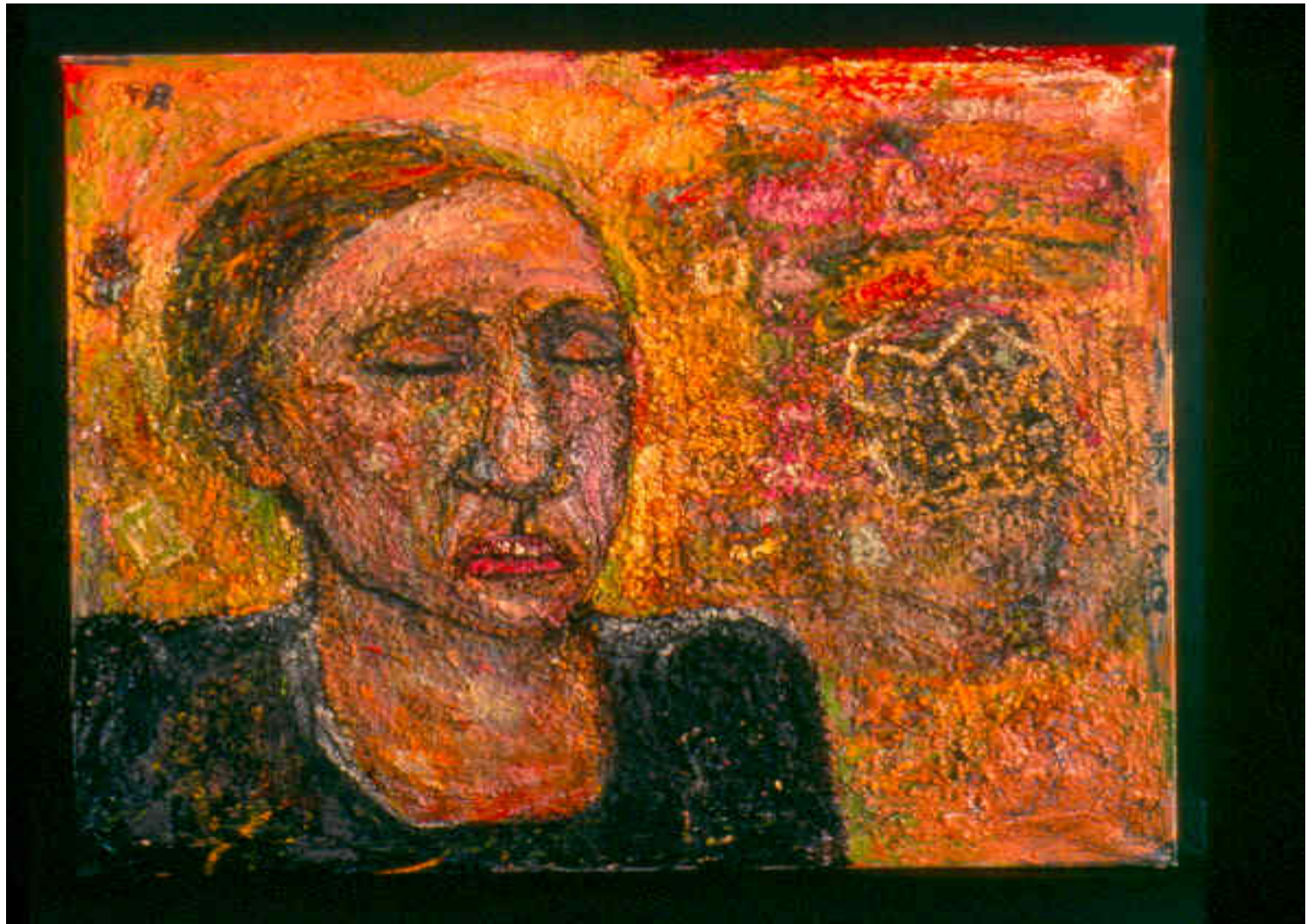
Ghost I



Ghost II



Notes from Lodz



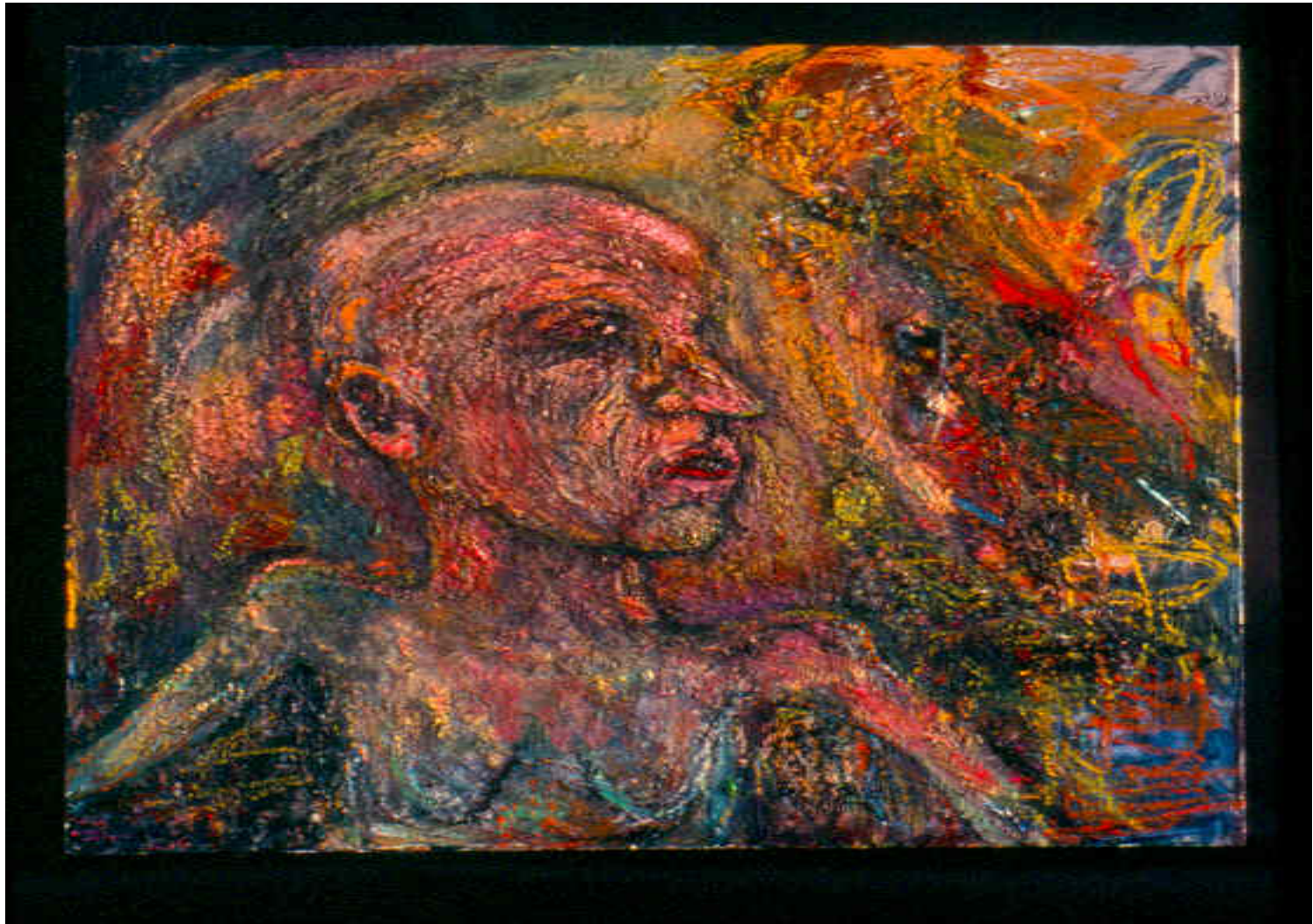
Nothing Has Changed, 1999



Oswiecim, 1999



Shower I



Shower II



Winding Sheet