

Everson Museum of Art

*From New York to Corrymore: Robert Henri
and Ireland*

February 11 – May 13, 2012



Young Robert Henri

Robert Henri at Corrymore



Corrymore



Marjorie Organ, *Portraits of Henri, Yeats, and Sloan*, nd., Gouache, pen and black ink on paper, Fort Lauderdale Museum of Art



West Coast of Ireland, 1913

Oil on canvas, 26 x 32", Everson Museum of Art, Museum purchase, 58.6.

Photographed by David Revette Photography



Corrymore, 1913, Oil on canvas, 20 x 24",
Estate of the Artist



Guide to Croaghan
(Brien O' Malley),
1913, Oil on canvas,
41 x 33", Cummer
Gallery of Art

Old Johnie (Johnie Cummings), 1913, Oil on canvas, 24 1/8 x 20 3/8", Baltimore Museum of Art





Old Johnie's Wife, 1913,
Oil on canvas, 32 x 26",
Indianapolis Museum of
Art

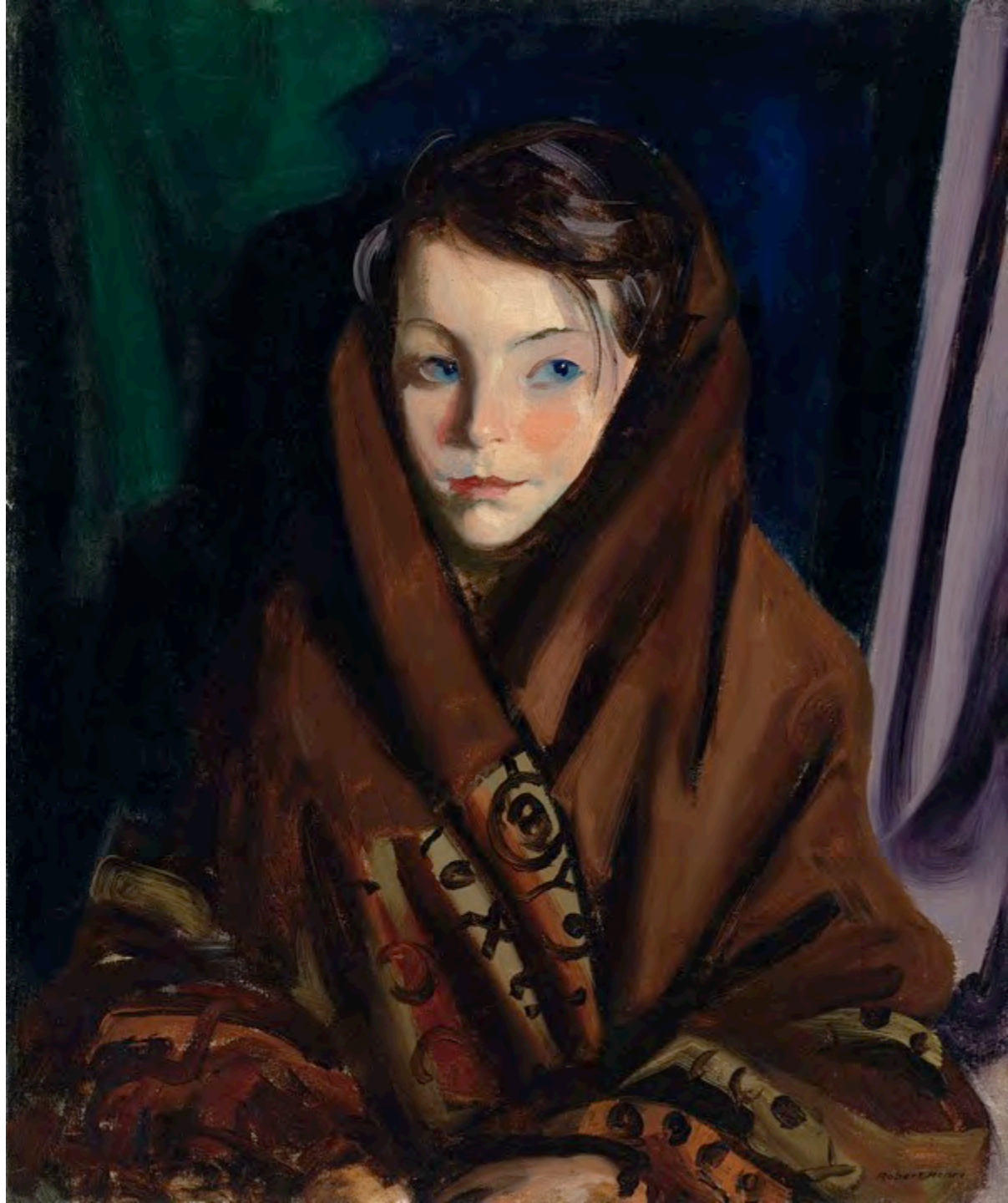
Irish Lass, 1913





Robert Henri, *Tom Cafferty*, 1924, Oil on canvas, Memorial Art Gallery of the University of Rochester
Gift of Mrs. Granger A. Hollister, 1926.1

Her Sunday Shawl, 1924,
Oil on canvas, 24 x 20",
Virginia Museum of Fine
Arts





The Fisherman's Son:
Thomas Cafferty, 1925,
Oil on canvas, 24 x 20",
Hirshhorn Museum and
Sculpture Garden

The Pink Pinafore (Mary Anne Cafferty), 1926, Oil on canvas, 24 x 20", Sheldon Memorial Art Gallery





Wee Maureen, 1926, Oil
on canvas, 24 x 20"
Pennsylvania Academy of
the Fine Arts

Winter Night, Fayette Park, 1937, Beatrice Wose-Smith, Oil on canvas, Gift of the Wose-Smith collection, P.C. 72.21





Charleston Doorway, 1929, Edward Hopper, Watercolor on paper, Gift of the Wose-Smith Collection P.C. 88.13



Early Spring, 1913-1914, Ernest Lawson, Oil on canvas, Museum purchase with funds from the Mary McMillan Fund, P.C. 58.1